

This note presents the latest workless household data from the Annual Population Survey, published by the Office for National Statistics (ONS) on 6 September 2012. The data provides information about households and the adults and children living in them, by their economic activity status, for the period January 2011 – December 2011.

Headline results

- A workless household is defined as one where all household members aged 16-64 are out of work.
- As of December 2011, 39,555 households were classed as workless in Bradford. This equates to 24.0% of all households in the district, the highest rate of all districts within the Leeds city region, and is higher than the regional (20.6%) and national (18.9%) averages.

Households by combined economic activity status of household members 2011

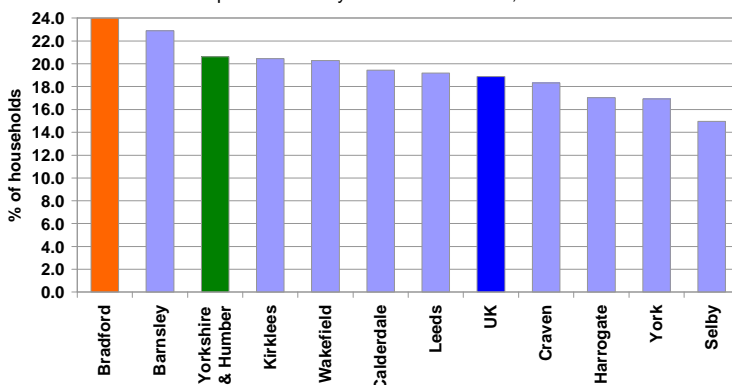
Area	Working Households		Mixed Households		Workless Households	
	Number	%	Number	%	Number	%
Bradford	71,548	43.4	53,816	32.6	39,555	24.0
Yorkshire & Humber	921,662	51.5	499,342	27.9	369,262	20.6
UK	10,776,158	52.3	5,935,316	28.8	3,886,323	18.9

Source: Annual Population Survey Household Dataset, Jan 2011 - Dec 2011, ONS

- The number of workless households in Bradford increased sharply by 39.2% between 2008 and 2010. This compares to an increase across the Yorkshire & Humber region of 16.5% and a national increase of 7.5%. Over the 12 months to December 2011, an additional 2,200 households were classed as workless in Bradford compared to the year before – a 5.8% increase compared to a small decline across the UK as a whole.
- There are 57,000 people aged 16-64 who are out of work and living in workless households. This represents 17.3% of all 16-64 year olds.
- 23,000 children aged under 16 live in households that are workless. This represents 20.0% of all children in the district, higher than the regional (18.0%) and national (15.9%) averages.
- The number of children living in workless households has fallen by 4,900 over the 12 months to December 2011, a 17.5% fall compared to an 8.4% fall across the region and a 3.5% fall across the UK.
- Figures for the Yorkshire & Humber region show that the most common reason given for being workless is sickness or disability (27.6%). A further 21% are unemployed (looking for work). 15.5% are looking after home/family. Other reasons are being retired or a student.

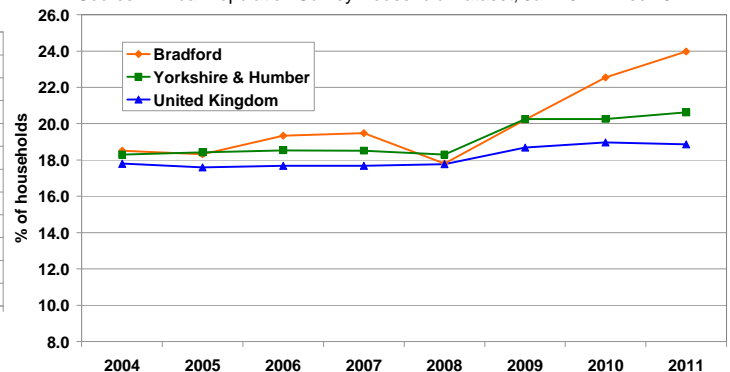
% of households that are workless - city region districts

Source: Annual Population Survey Household Dataset, Jan 2011 - Dec 2011



% of households that are workless - trends

Source: Annual Population Survey Household Dataset, Jan 2011 - Dec 2011



Supporting information/links

Data can be downloaded from Office for National Statistics
Website: <http://www.ons.gov.uk/ons/publications/re-reference-tables.html?edition=tcm%3A77-270765>

Produced by:

Strategy & Policy Team, Business Support,
City of Bradford Metropolitan District Council.
Email: kylie.henshaw@bradford.gov.uk
Phone: 01274 433780
Web: www.bradfordeconomy.com