

This note presents the latest labour market data available for Bradford district (12 months to December 2012) released today by the Office for National Statistics in the Annual Population Survey.

The survey results show that although Bradford's labour market position remains relatively poor, substantial improvements were made over the year to December 2012 in all the key labour market indicators.

Bradford labour market indicators						
Labour market indicator	December 2011		December 2012		Annual Change Dec 11 to Dec 12	
	Number	Rate	Number	Rate	Number	%
Economically active	231,000	70.3	239,200	71.9	8,200	3.5
In employment	201,300	61.3	213,300	64.2	12,000	6.0
<i>Workless</i>	<i>127,300</i>	<i>38.3</i>	<i>119,200</i>	<i>35.8</i>	<i>-8,100</i>	<i>-6.4</i>
Unemployed	29,800	12.9	25,900	10.8	-3,900	-13.1
Economically inactive	97,500	29.7	93,300	28.1	-4,200	-4.3

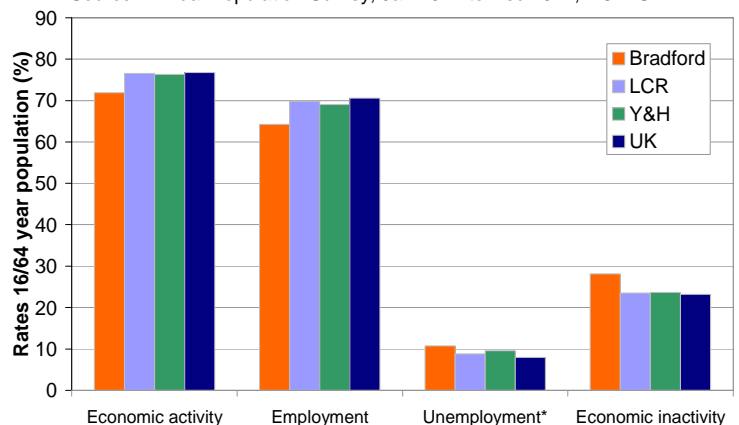
Source: Annual Population Survey, NOMIS

### Key findings:

- The number economically active<sup>1</sup> in Bradford grew by 8,200 to 239,000. This growth was achieved by an increase in the number employed and a fall in numbers unemployed and economically inactive.
- The number of people in employment<sup>2</sup> in the district increased over the year to 213,300 - a substantial increase of 12,000, or 6% rise over the year.
- At 64.2% Bradford's employment rate remains significantly below the Leeds city region (69.8%), Yorkshire & Humber (69.0%) and UK (70.6%) averages
- Since December 2008, Bradford's employment rate has fallen by 4.2 percentage points. Improvements to the rate were made over the year to September 2012 however the most recent quarter to December 2012 shows a very slight fall.
- Bradford's economic activity rate at 71.9% is also significantly lower than the city region (76.5%), regional (76.3%) and UK rates (76.8%).
- The total number out of work (workless<sup>3</sup>) was 119,200 in December 2012 made up of 25,900 unemployed<sup>4</sup> and 93,300 economically inactive<sup>5</sup>. This represents a fall in workless numbers of 8,100 over the last 12 months in Bradford, but at 35.8% the proportion of people in Bradford who are workless remains higher than the averages for the city region (30.2%), Yorkshire & Humber (31.4%) and UK (29.4%)
- Bradford's position within Yorkshire & Humber is relatively poor, out of 21 districts:
  - Bradford has the lowest economic activity rate and second lowest employment rate.
  - Bradford has the highest economic inactivity rate of all districts in the region, but the eighth highest unemployment rate.

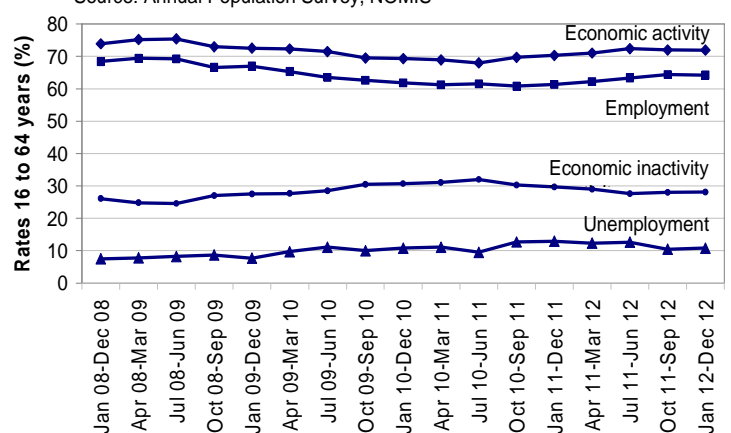
Latest labour market indicators - December 2012

Source: Annual Population Survey, Jan 2012 to Dec 2012, NOMIS



Labour market trends - Bradford Dec 2008 to Dec 2012

Source: Annual Population Survey, NOMIS



**Definitions:**

1. **Economic activity:** The number in employment or unemployed and looking for and available to start work, expressed as a percentage of the population aged 16-64.
2. **Employment:** Proportion of employees and those self employed expressed as percentage of the 16-64 population.
3. **Worklessness:** All those out of work including unemployed and economically inactive. The rate is the number of workless expressed as a percentage of the 16-64 population.
4. **Unemployment:** Based on the ILO definition, includes those out of work looking for a job and available to start work. The rate is the number unemployed expressed as a proportion of the economically active.
5. **Economic inactivity:** The number not in employment and not looking for work/ not available to start work, expressed as a percentage of the 16-64 population.

**Source Data**

Annual Population Survey, NOMIS website <https://www.nomisweb.co.uk/Default.asp>

**Supporting information/links:**

- Labour Market Profile <https://www.nomisweb.co.uk/reports/lmp/la/2038432028/report.aspx?town=Bradford>
- Latest monthly claimant unemployment update for Bradford: <http://www.investinbradford.com/bradford-economy/Economic+Intelligence/Monthly+unemployment+update>
- Youth unemployment in Bradford: <http://www.investinbradford.com/bradford-economy/Economic+Intelligence/Youth+unemployment.htm>

**Contact:**

Mary Johnston  
Strategic Support  
City of Bradford Metropolitan Council  
Department of Business Support

Phone: 01274 434035

Email: [mary.johnston@bradford.gov.uk](mailto:mary.johnston@bradford.gov.uk)

This briefing note is available to download from [www.bradfordeconomy.com](http://www.bradfordeconomy.com).